

Women's Single Jersey Polo



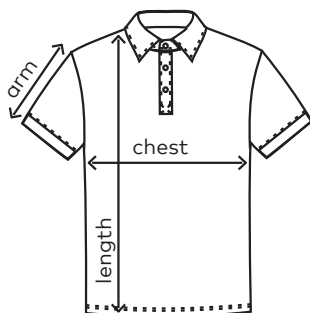
colours:

-  white black
-  black white
-  burgundy black
-  wild lime black



4015 | XS-XXL | 180 g/m² | 100 % cotton

Timeless single jersey polo with button panel and 3 tone-in-tone buttons, shortened sleeves with cuffs and side slits, produced of combed cotton. The polo has a modern cut.



	XS	S	M	L	XL	XXL
chest	42	45	49	53	57	62
length	62	64	66	68	70	72
arm	16	17	18	19	20	22

Sizes and weights + /- 5%. Subject to amendment.