

Women's Polo Contrast Stripes



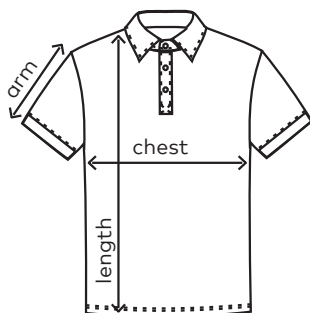
colours:

-  black
-  fire red
-  navy



4910 | S-XXL | 220 g/m² | 100 % cotton

Contrast piqué polo with button panel and 3 tone-in- tone buttons, contrasting colour on the collar and sleeve band, produced of combed cotton. The polo has a fitted cut.



	S	M	L	XL	XXL
chest	52	55	58	61	64
length	68	70	72	74	77
arm	22	23	24	25	26

Sizes and weights + /- 5%. Subject to amendment.