



Women's Oxford Shirt LS 6915

XS-XXXL

60% cotton, 40% polyester

125 g/m²

60°

Regular fit

Classic oxford long-sleeve mixed fabric shirt with reinforced kent collar and button panel with tone-in-tone buttons, as well as a separate chest pocket and spare button. The specific features of this shirt: easy care mixed fabric, darts front and back, double back yoke, curved hem, produced of combed cotton with polyester. Classical single packing.

white

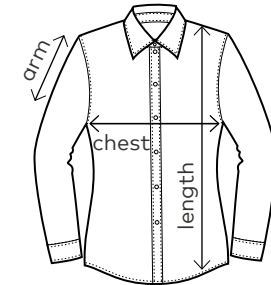
charcoal

rosa

sky



Women's Oxford Shirt LS Item: 6915



	chest	length	arm
XS	44	64	60
S	47	66	61
M	50	68	62
L	54	70	63
XL	58	72	64
XXL	62	74	65
XXXL	68	76	66

Sizes and weights +/-5%. Subject to amendment.

