



Women's Padded Jacket C+ 7622

S-XXXL

outer material and lining 100 % nylon,
padding 100 % polyester (padding)

180 g/m²

30°

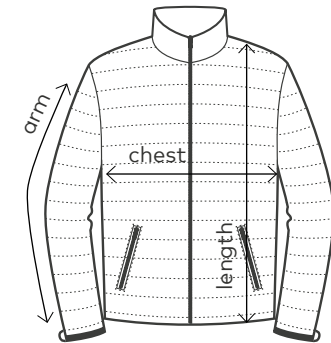
Regular fit

Padded jacket with stand-up collar, full-length zip and 2 side pockets with zip as well as fixing for outer jacket, produced of nylon (outer-/inner material) and polyester (wadding).

black steel gray aqua
 navy lime green



Women's Padded Jacket C+ Item: 7622



	chest	length	arm
S	49	63	63
M	52	63	64
L	55	65	65
XL	58	67	66
XXL	61	69	67
XXXL	64	71	68

Sizes and weights +/-5%. Subject to amendment.

