

Women's Polo 92/8

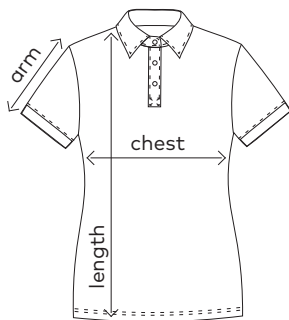


colours:

-  white
 -  black
 -  charcoal
 -  new light grey
 -  cherry berry
 -  navy
-     

4150 | S- XXL | 180 g/m² | 92 % cotton, 8 % elastane

Modern piqué polo with narrow button panel, 3 tone-in-tone buttons and sleeve cuffs, produced of combed cotton with elastane for better comfort. The polo has a fitted cut.



	S	M	L	XL	XXL
chest	43	46	49	53	57
length	62	65	68	71	73
arm	15	16	18	20	22

Sizes and weights + /- 5%. Subject to amendment.